



Technical Data

Specifications & Capacities

JF1050 CDH

Translation of the original instructions

[m] [kg]

06.05.2026 | REV0.0

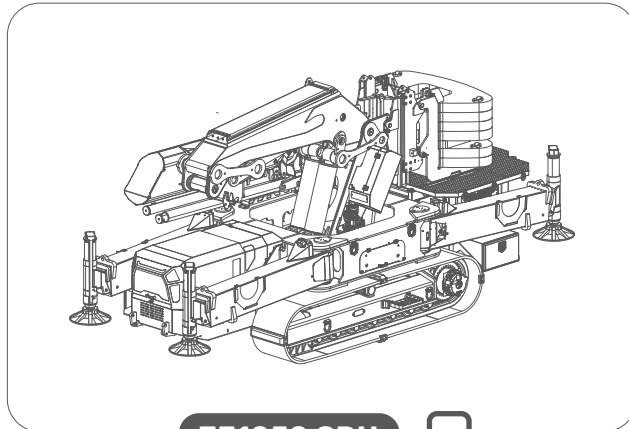


EN 12999:2020

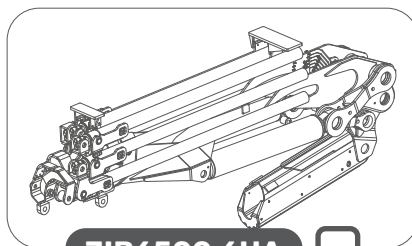
INDEX

Index	2
Crane configuration	3
Overall dimensions	4
Overall informations.....	5
Winch rope maximum reach.....	9
Stability areas	10
Outriggers.....	11
Tipping line - Load chart selection	12
Pressure charts.....	13
Main boom load chart.....	15
JIB6500.6HA load chart	18
One-man basket chart.....	22
Two-men basket chart.....	23
Two-men rotating basket chart.....	24
JIB6500.6HA features.....	25
One-man basket features	26
Two-men basket features	27
Two-men rotating basket features	28
Symbols	30

CRANE CONFIGURATION



JF1050 CDH



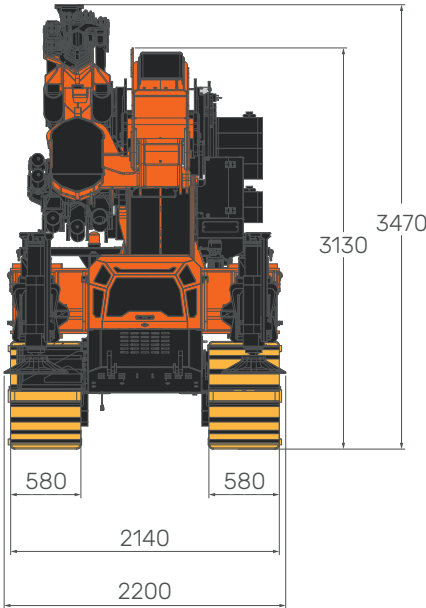
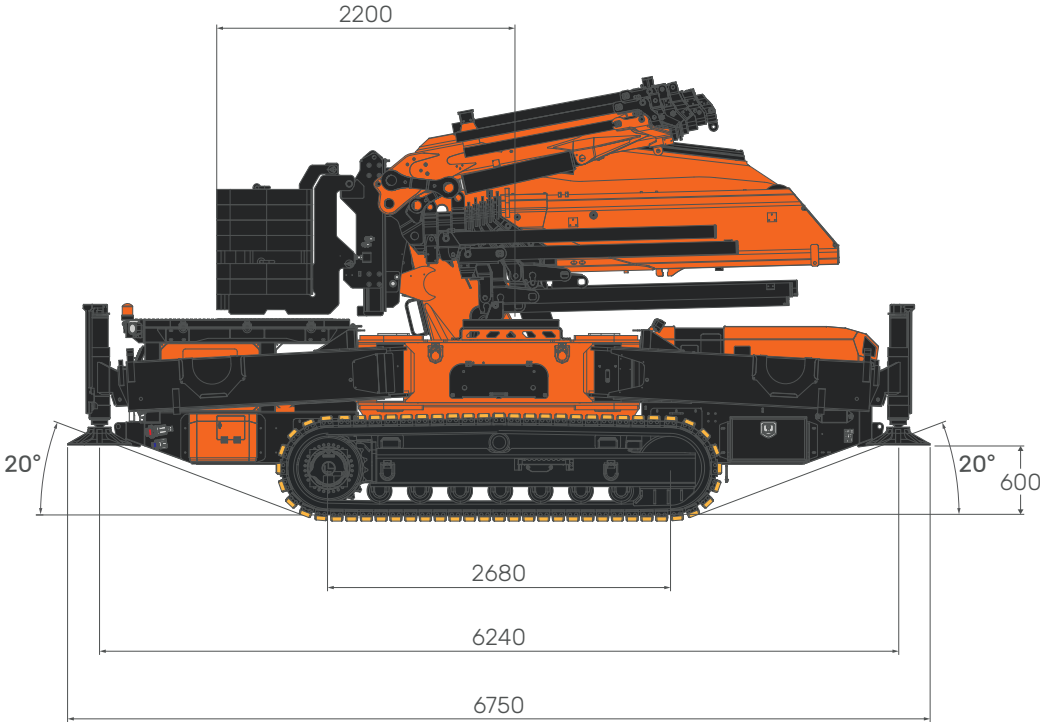
JIB6500.6HA

JF1050 CDH

Overall dimensions

06.05.2026 | REV0.0

OVERALL DIMENSIONS



[mm]

OVERALL INFORMATION

	DESCRIPTION	U.M.	VALUE
OVERALL DIMENSIONS	Height	mm	3.130
	Length		6.750
	Width		2.200
BOOM	Length	m	4,6/19,75
	Speed	s	- (4,6/19,75)
SLEWING	Angle	°	360°
	Speed	rpm	-
LIFTING	Working Angle	°	0°/80°
	Speed	s	- (0°/80°)
MAX CAPACITY		kg	22.000
MAX OUTRIGGERS MAX LOAD		daN	30.675 ^[1]
TRACK LOAD		kg/cm ²	-
TRAVEL SPEED	Slow	km/h	-
	Fast		-
MAX GRADEABILITY (CLOSED TRACKS)		°	-° (-%)
WORKING TEMPERATURE		°C	-10°/+40°
SOUND EMISSIONS		dB	-
MAX WIND SPEED IN WORKING CONDITIONS		m/s	13,8
Lifting Class (UNI 4301-1)		A1	

^[1]: Static lifting

JF1050 CDH

06.05.2026 | REV.0.0

Overall informations

WEIGHT



CRANE	Standard Configuration	kg	~ ^[1] [2]
COUNTERWEIGHT	CW-1	kg	3.000
	CW-2		2.000

HOOKBLOCKS



HOOKBLOCK	Single Fall	kg	73
	Double Fall		71
	Triple Fall		74
	Jib Single Fall		84




ACCESSORIES



JIB	JIB6500.6HA	With activation	kg	-
		Without activation		-
WINCH	W2000-JFM	kg	200	
	W3000-JFM-JFX		320	
MANUAL EXTENSIONS	ME1-JF1050.8	kg	114	
	ME2-JF1050.8		87	
	MEH-JF1050.8		171	
	ME1-JIB6500.6		36	
	ME2-JIB6500.6		25	
	ME3-JIB6500.6		16	
	MEH-JIB6500.6		22	
POWERPACK	3-Phase Kit	kg	80	
OUTRIGGERS MATS	OM500.1 (x4)	kg	92	
LOW MARKING PADS	WTP-JFX (x92)	kg	300	
PLE	MWP-1PG.JIB6500.6HA	kg	133	
	MWP-2PG.JIB6500.6HA		160	
	MWP-2PG-A.JIB6500.6HA		133	
	MWP-2PGR.JIB6500.6HA		207	
	MWP-2PGR-A.JIB6500.6HA		173	

[1]: Dry weight

[2]: Estimated fluids weight = 150 kg

ENGINE		Power Supply		Diesel		
		ENGINE	Power	kW	55,4	
				HP	75	
Tank Capacity	L	61				
POWERPACK		POWER SUPPLY		3 PH + N + PE		
		- (CE)		3 PH + PE		
		- (UL-CSA)		3 PH + PE		
		3-PHASE KIT	- (CE)	Tension	V	400
				Frequency	Hz	50
				Motor Power	kW	13,5
			- (UL-CSA)	Tension	V	480
				Frequency	Hz	60
				Motor Power	kW	13,5
		BATTERY CHARGER	- (CE)	Charge	V	24
					Ah	27
			- (UL-CSA)	Charge	V	24
Ah	27					
HYDRAULIC SYSTEM			MAX WORKING PRESSURE		bar	325
			TANK CAPACITY		L	274
		HYDRAULIC SYSTEM CAPACITY		L	-	
		OIL	ISO6743-4:HV	Mineral	ISO VG46	
		ENGINE PUMP	Displacement	cm ³ /rev	80	
			Max Oil Flow	L/min	160	
		3-PHASE MOTORIZATION PUMP	Displacement	cm ³ /rev	45	
			Max Oil Flow	L/min	60	

JF1050 CDH

Winch

06.05.2026 | REV0.0

WINCH

W2000-JFM



LAYER	MAX PULL LINE daN	ROPE SPEED	
		STANDARD	m/min
1	2.000 ^[1]		45
4	- ^[1]		57,5

ROPE

WIRE ROPE	BREAKING LOAD	∅	TOTAL LENGHT
	daN	mm	m
Anti twist 19x7 right lang lay	12.750	12	60

W3000-JFM-JFX



LAYER	MAX PULL LINE daN	ROPE SPEED	
		STANDARD	m/min
1	3.000 ^[1]		28
3	- ^[1]		36

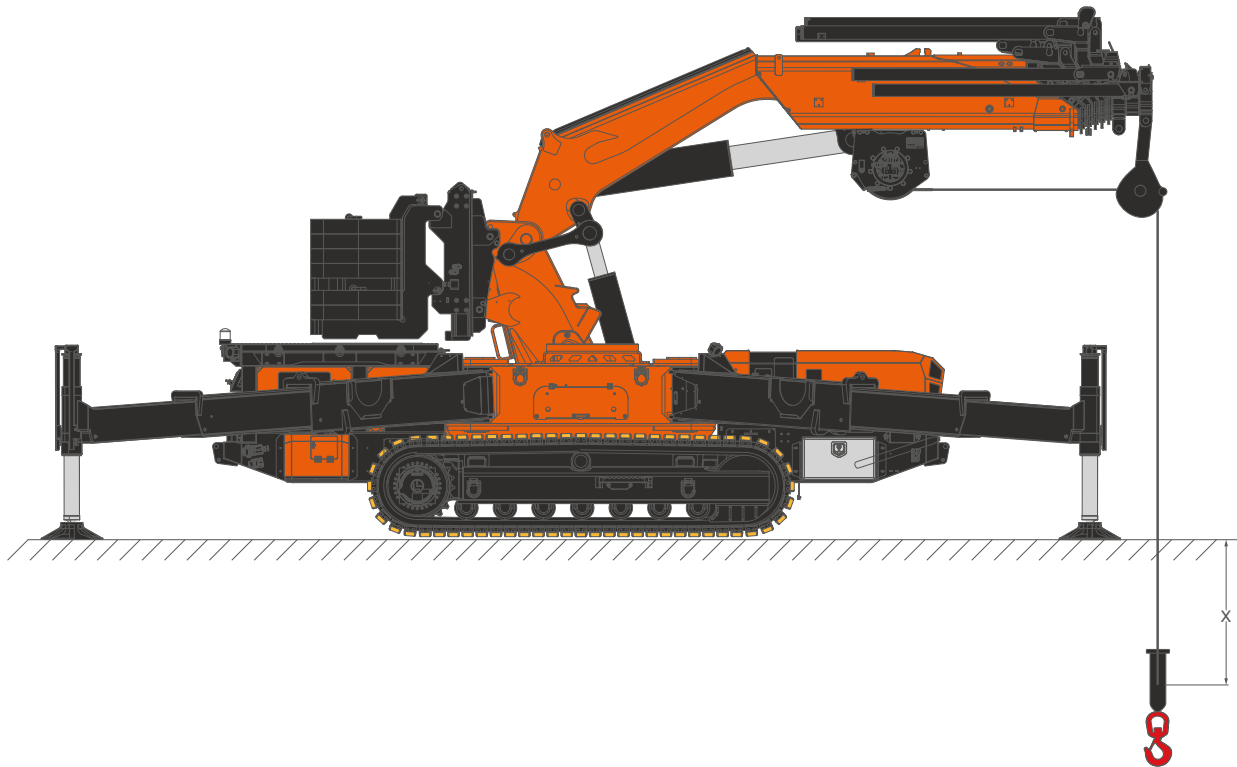
ROPE

WIRE ROPE	BREAKING LOAD	∅	TOTAL LENGHT
	daN	mm	m
Anti twist 19x7 right lang lay	18.600	14	60

^[1]: LMI limited at 2.000 kg.

^[2]: LMI limited at 3.000 kg.

WINCH ROPE MAX REACH

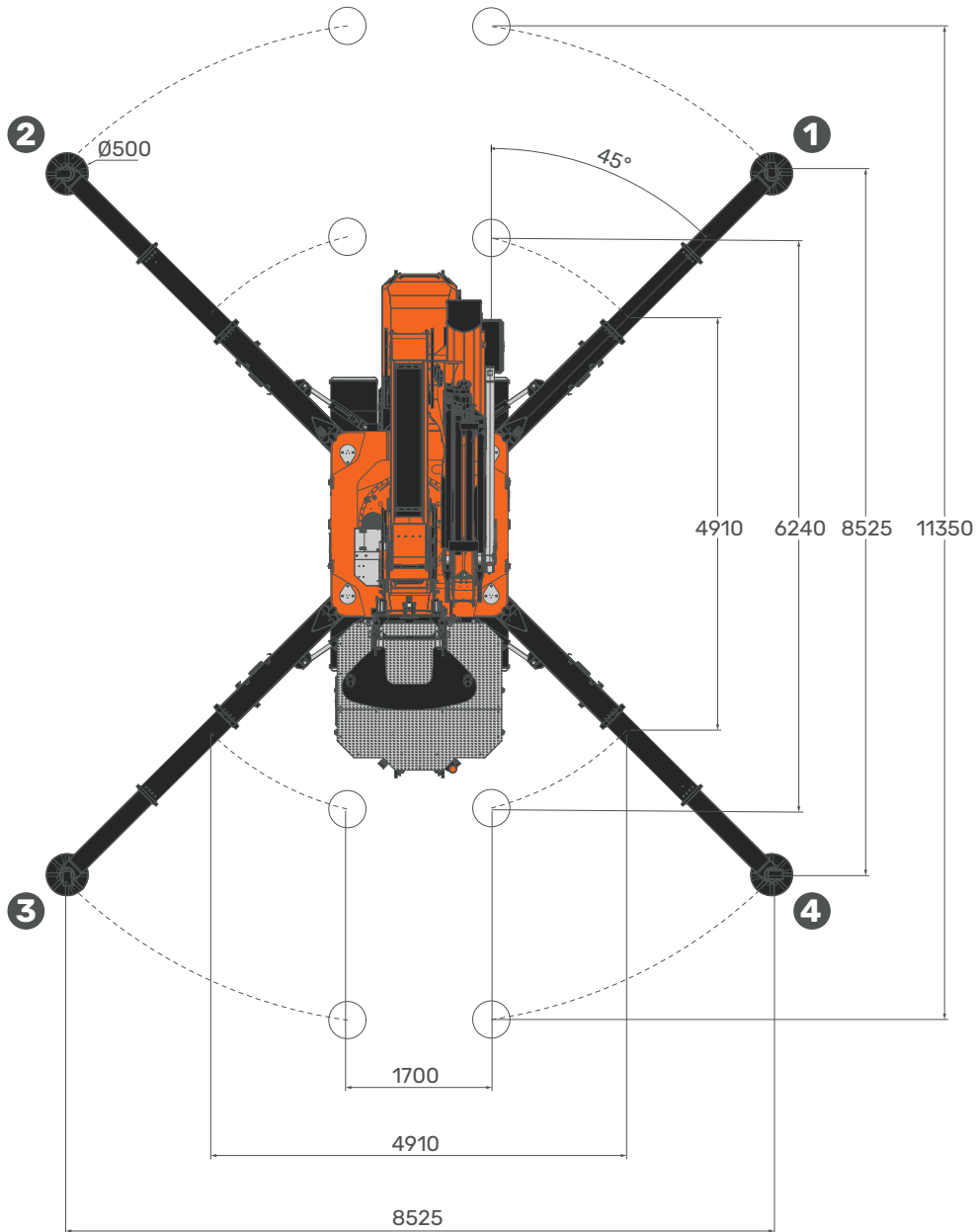


ROPE

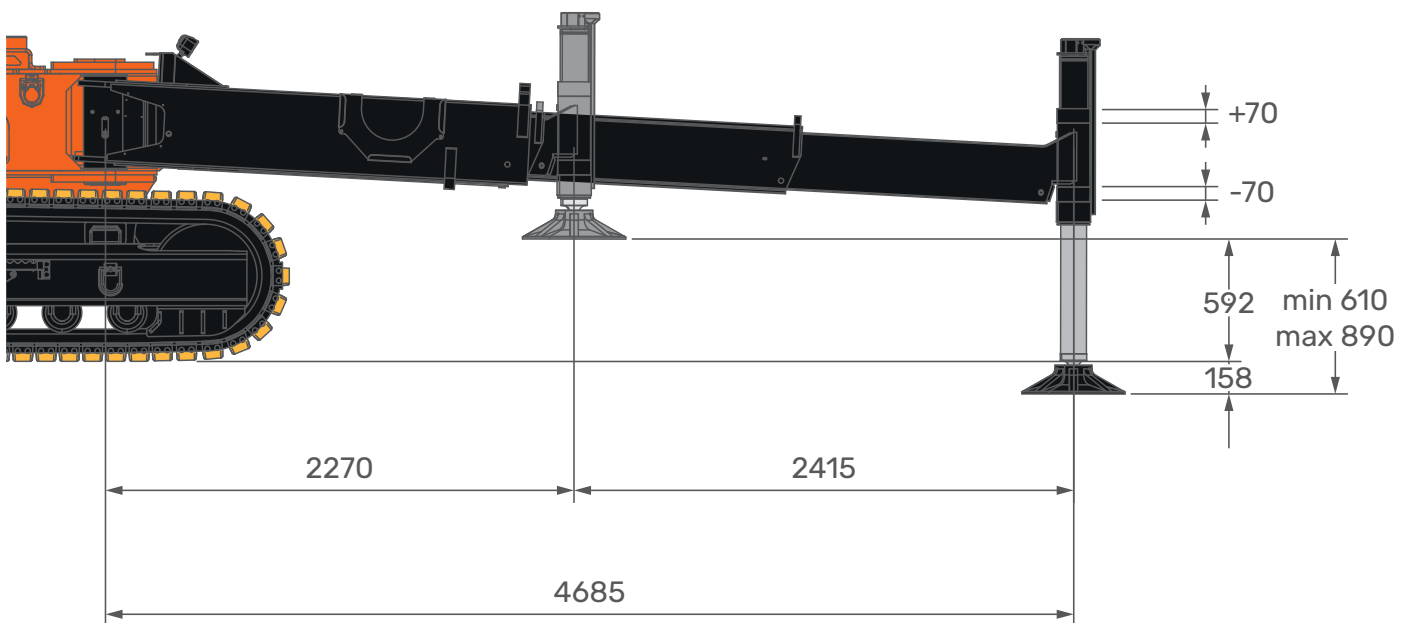
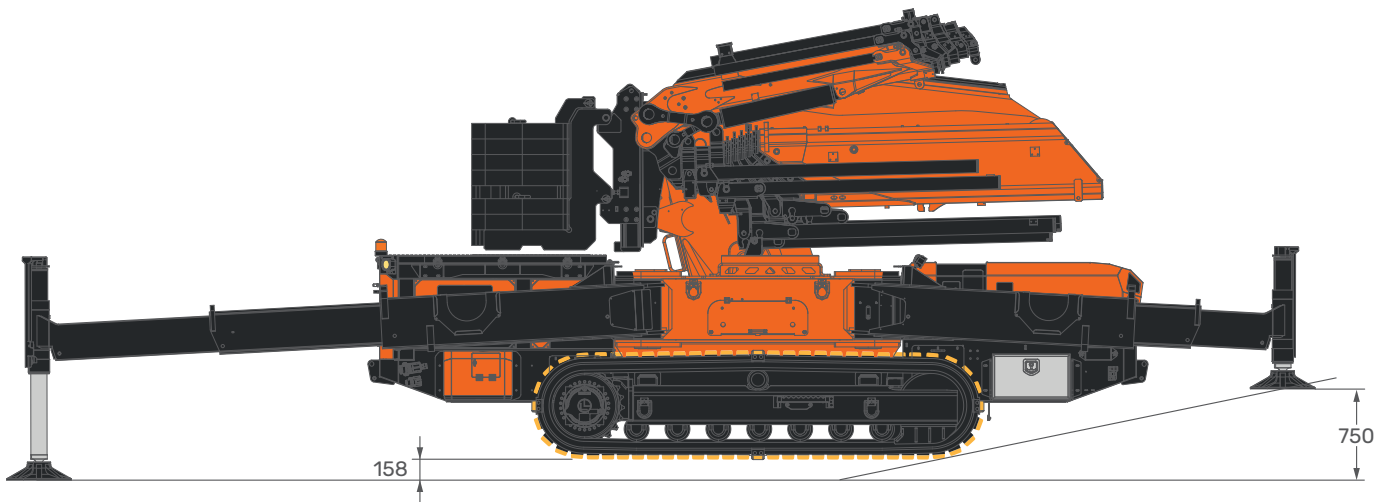


W2000-JFM	Parts of Line	1	m	51
		3		15
W3000-JFM-JFX	Parts of Line	1	m	50
		3		14

STABILITY AREAS



OUTRIGGERS



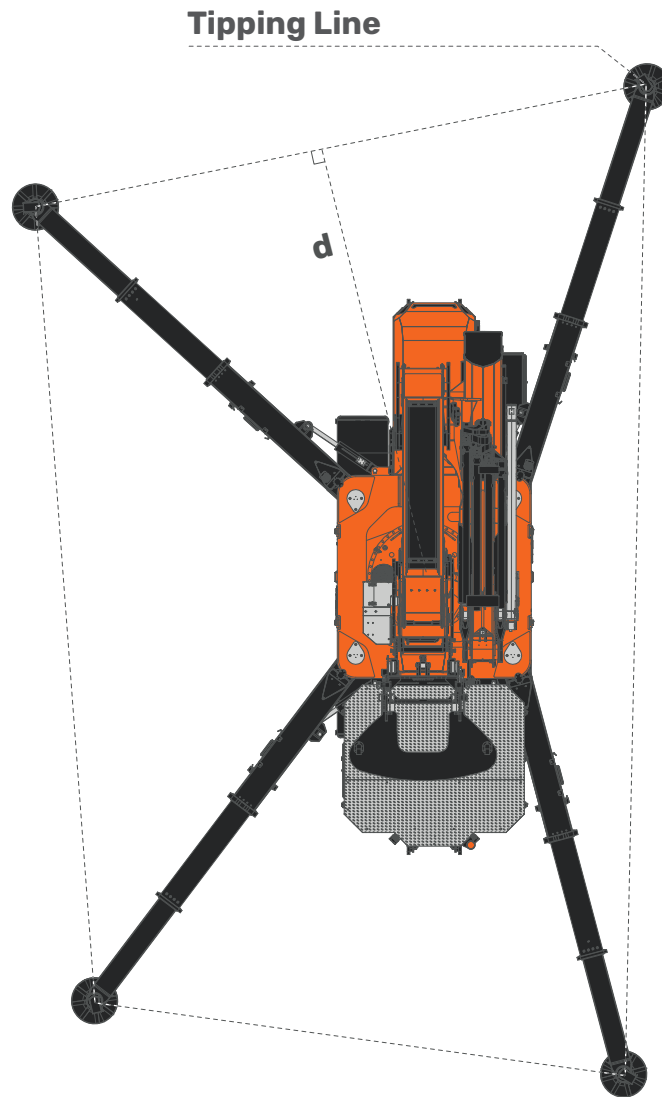
[mm]

JF1050 CDH

Tipping line - Load chart selection

06.05.2026 | REV0.0

TIPPING LINE

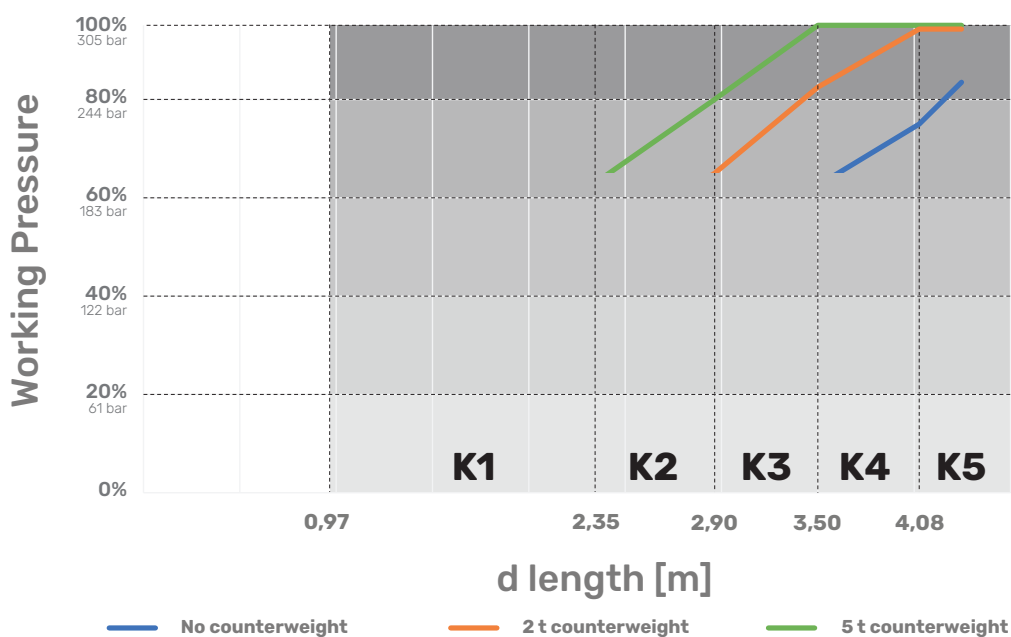
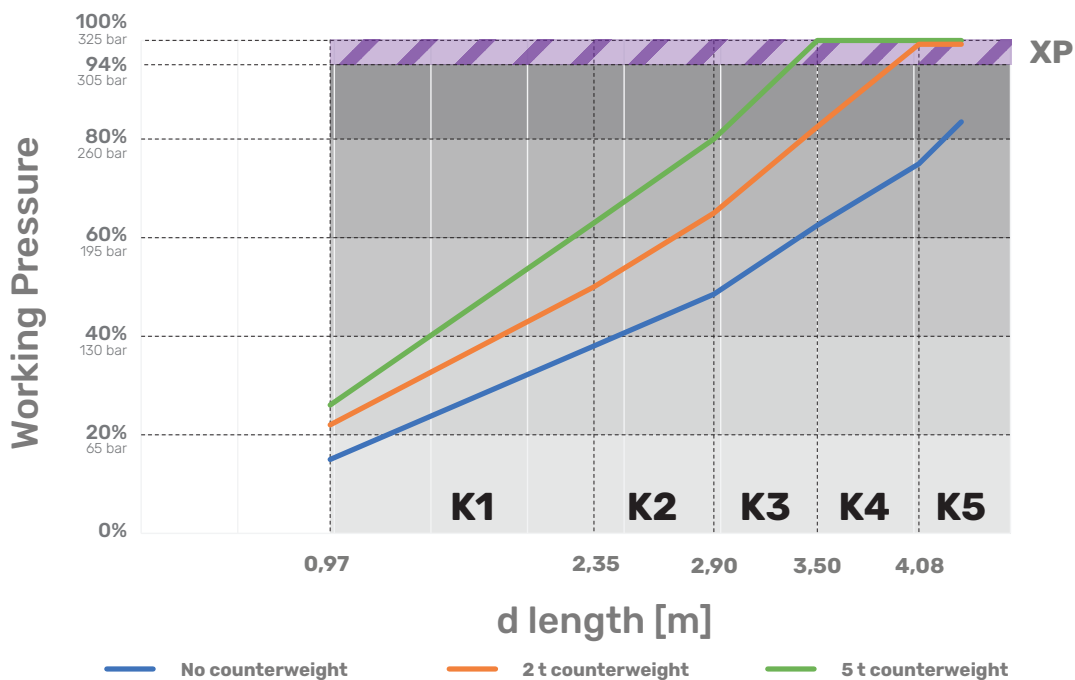


LOAD CHART SELECTION

K	d min	d max
K1	0,97 m	2,35 m
K2	2,35 m	2,90 m
K3	2,90 m	3,50 m
K4	3,50 m	4,08 m
K5	4,08 m	-

PRESSURE CHARTS

MAIN BOOM

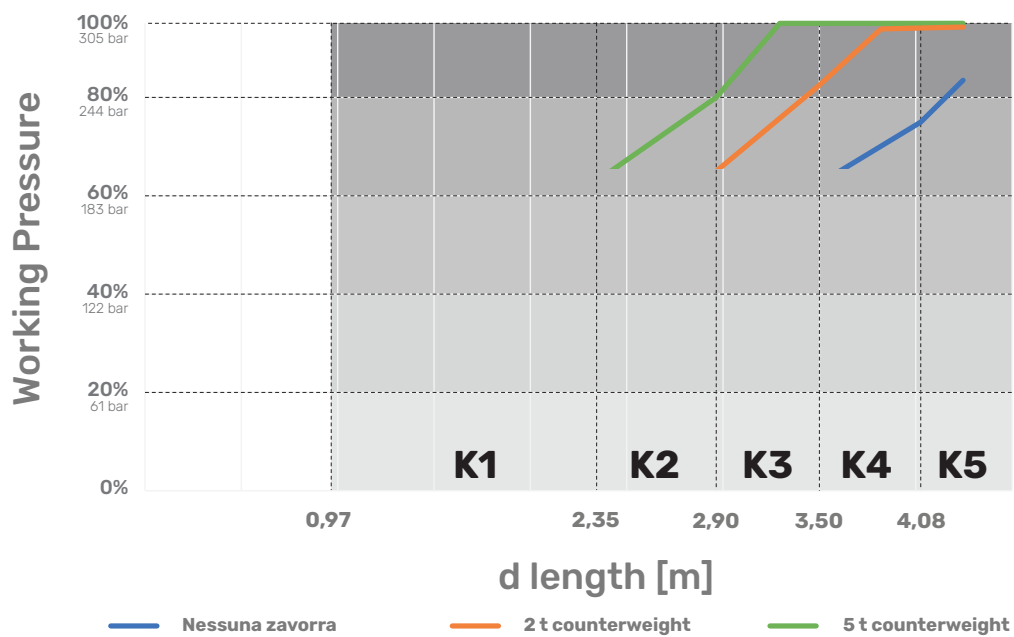
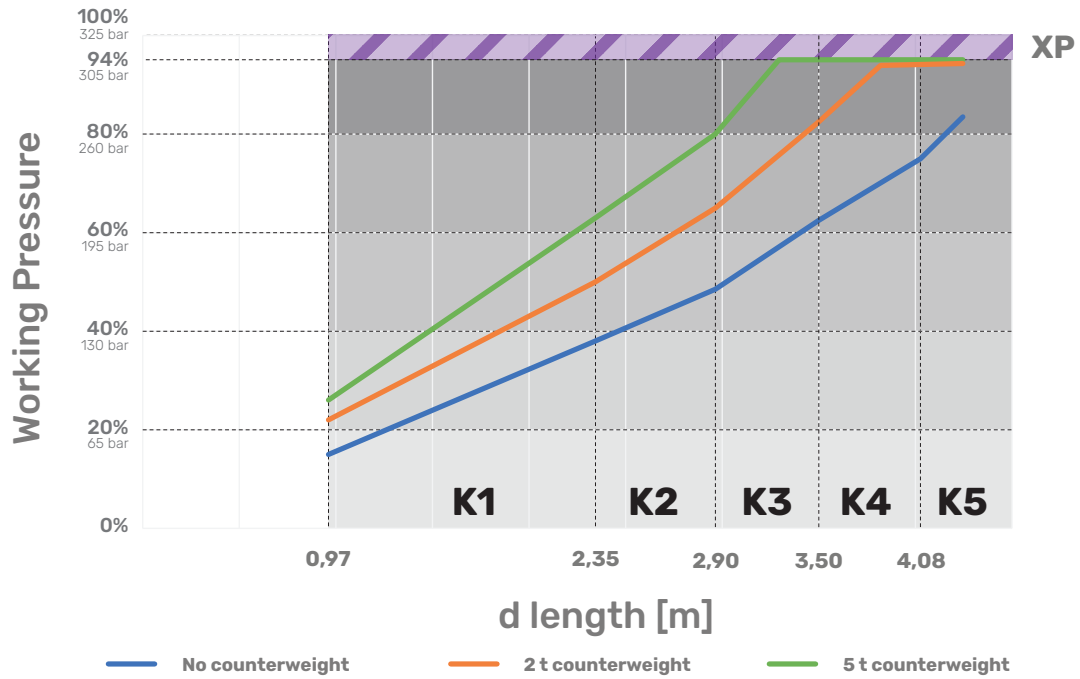


JF1050 CDH

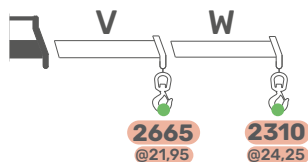
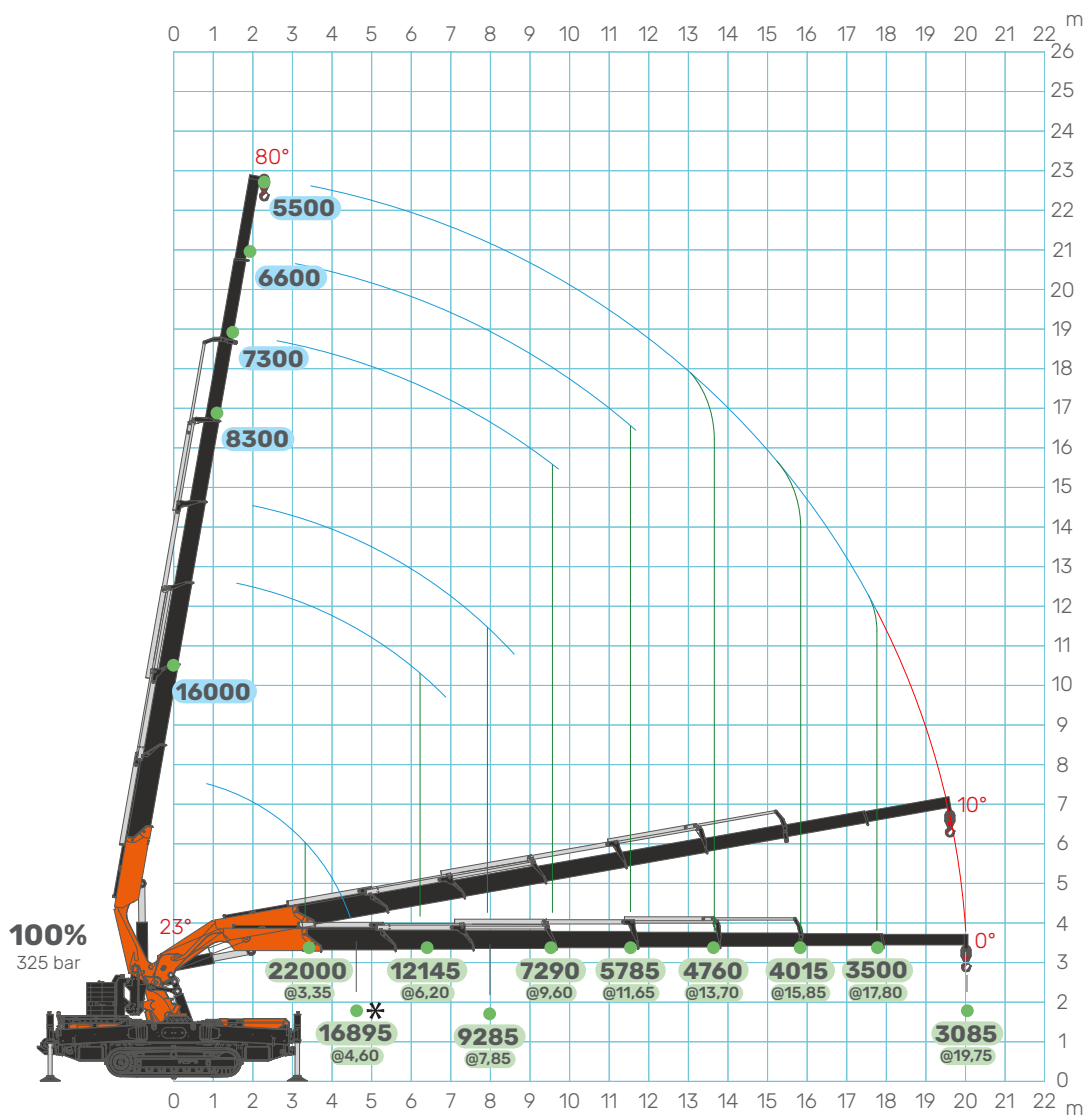
Pressure charts

06.05.2026 | REV.0.0

JIB6500.6HA



MAIN BOOM

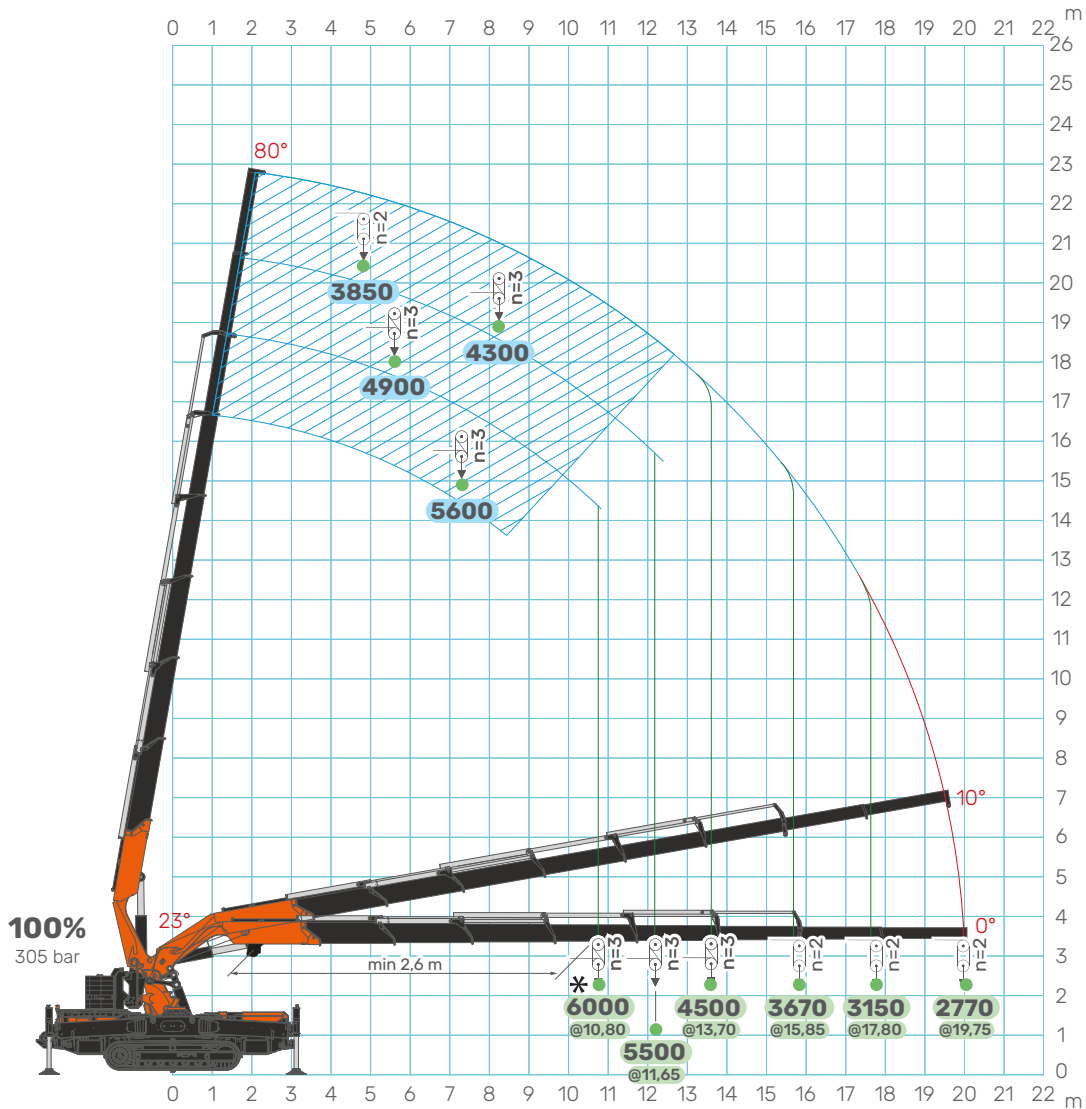


[m] [kg]

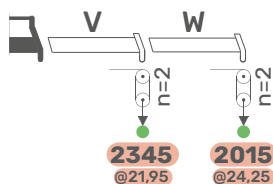
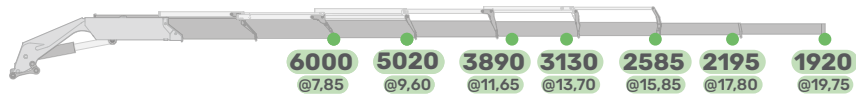
JF1050 CDH

Main boom load chart

06.05.2026 | REV.0.0



80%
244 bar



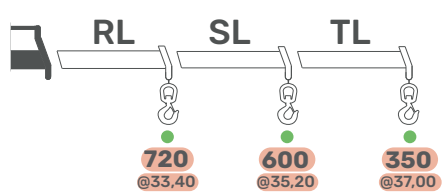
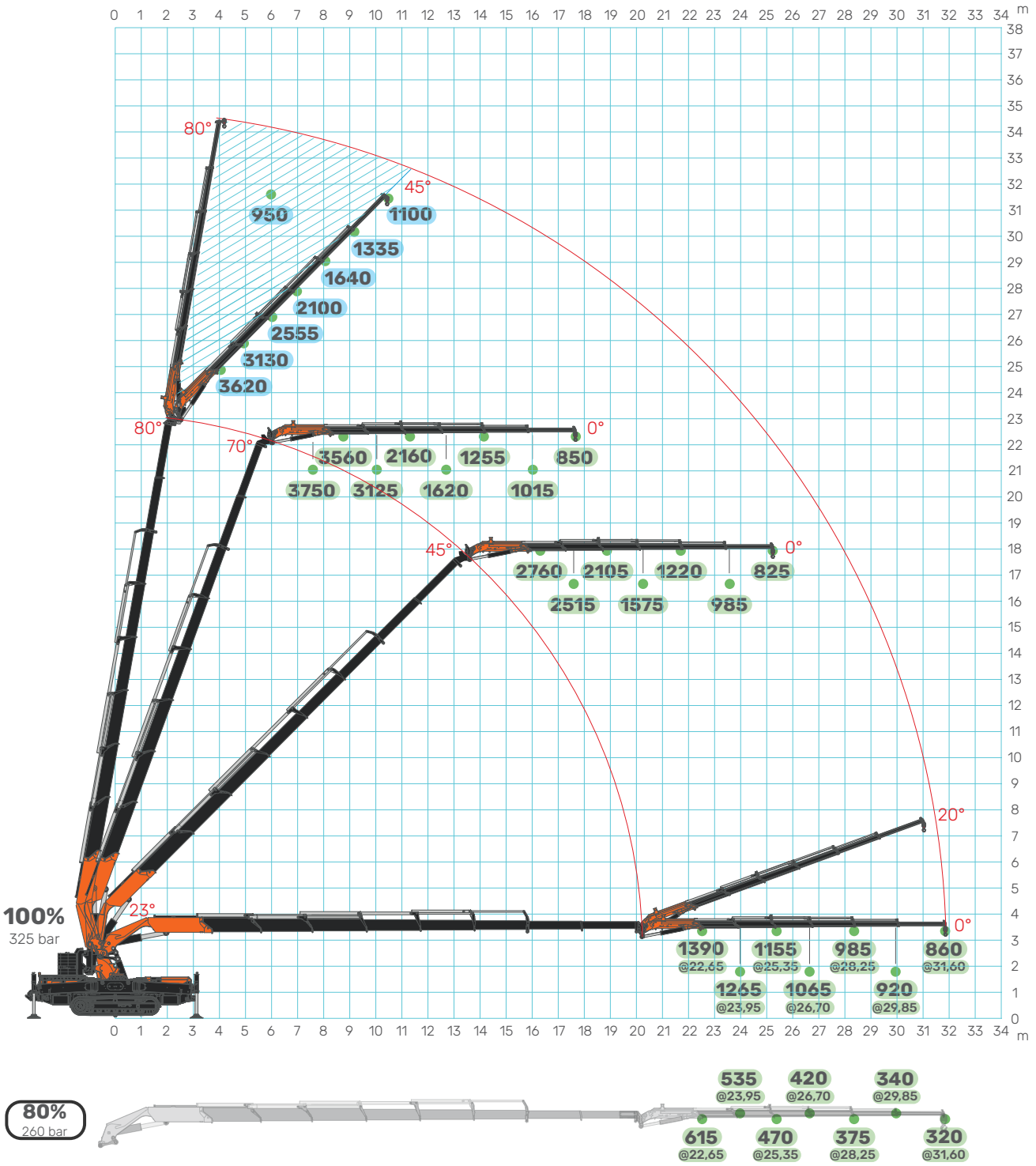
[m] [kg]

JF1050 CDH

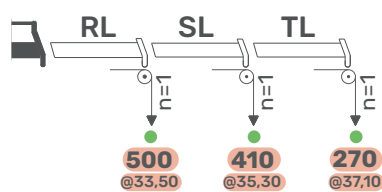
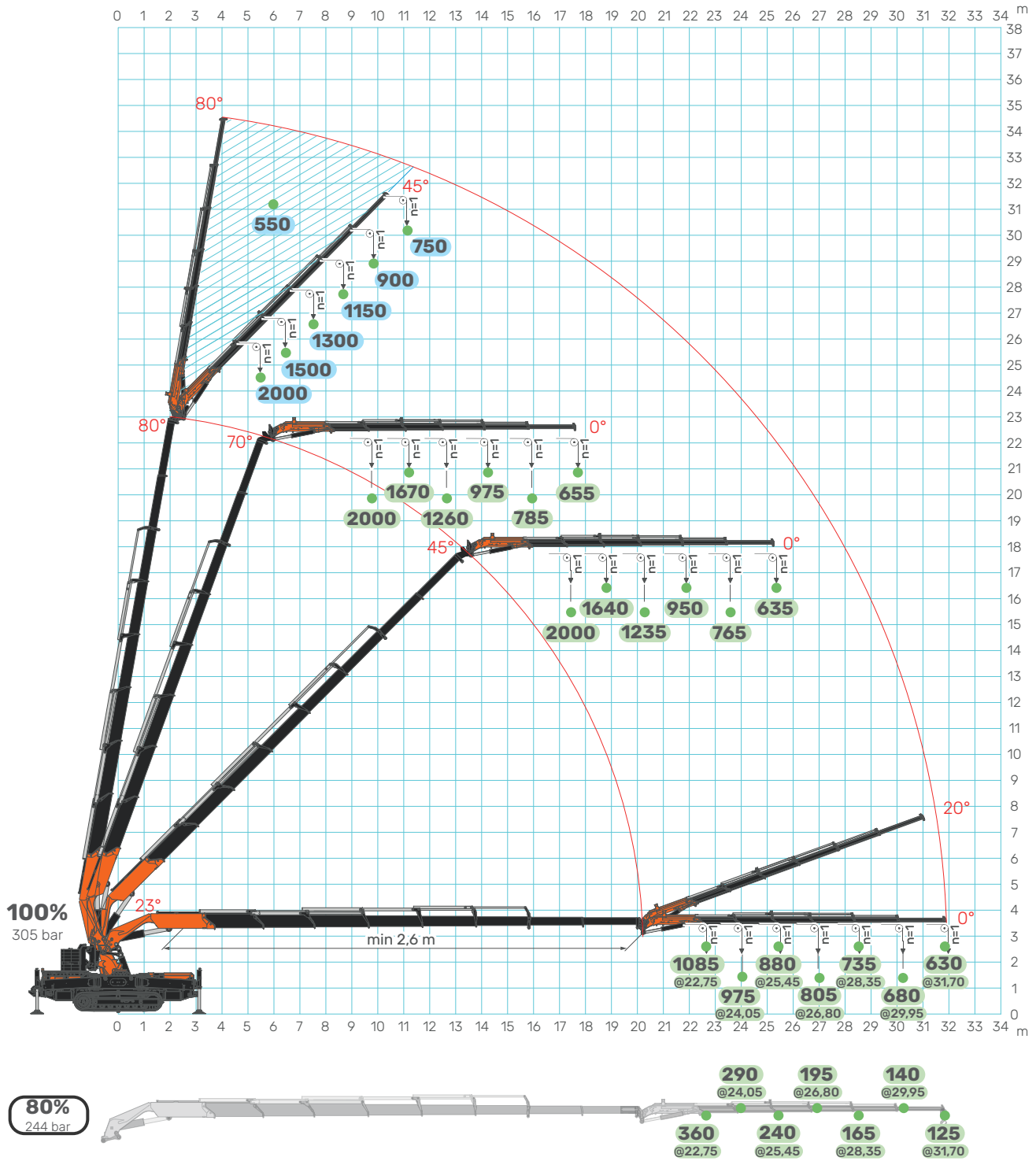
JIB6500.6HA load chart

06.05.2026 | REV.0.0

JIB6500.6HA



[m] [kg]

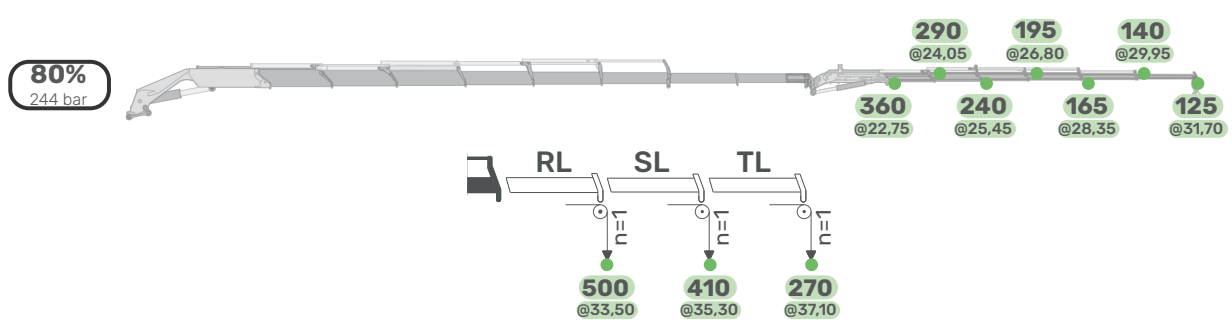
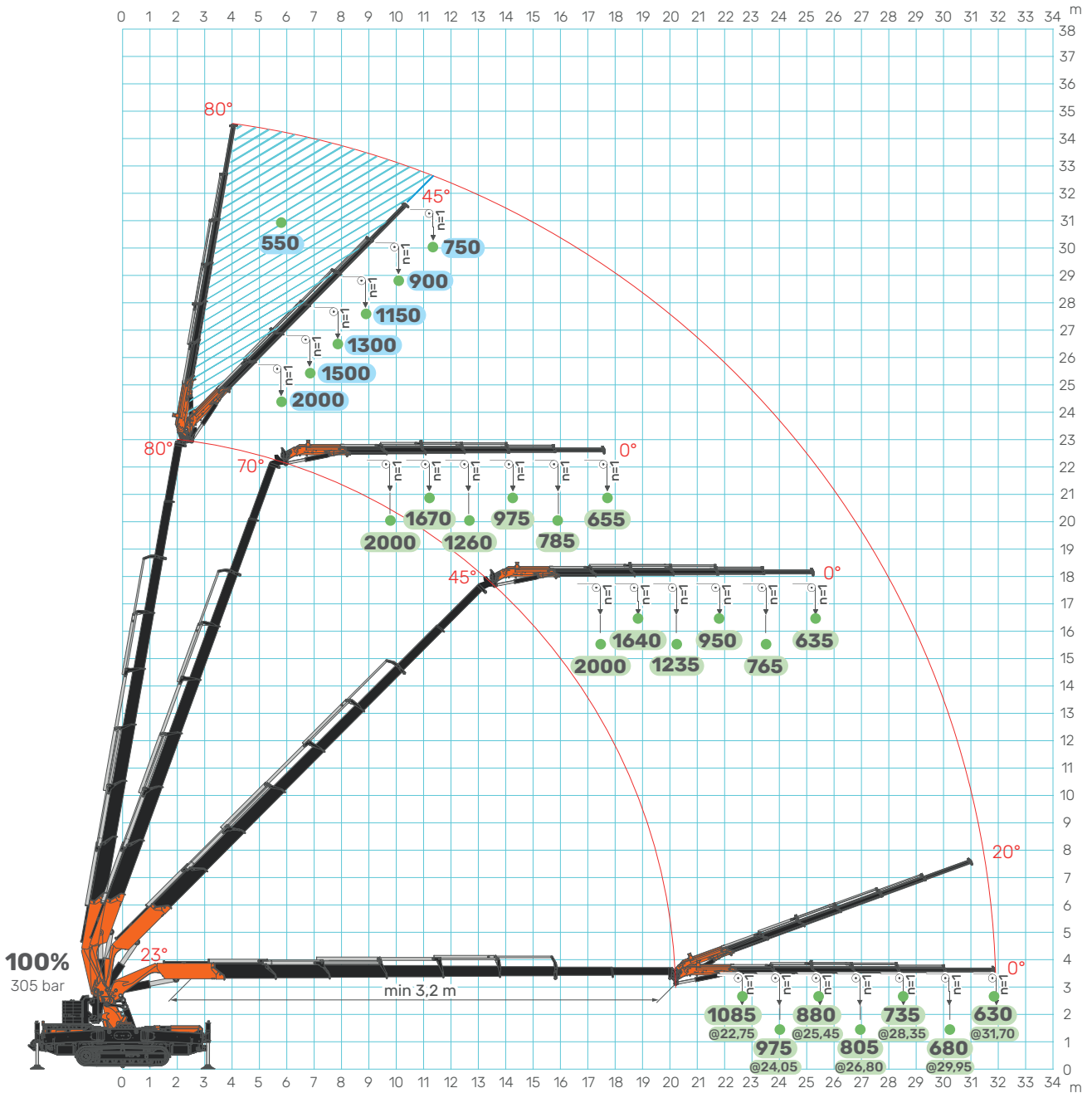


[m] [kg]

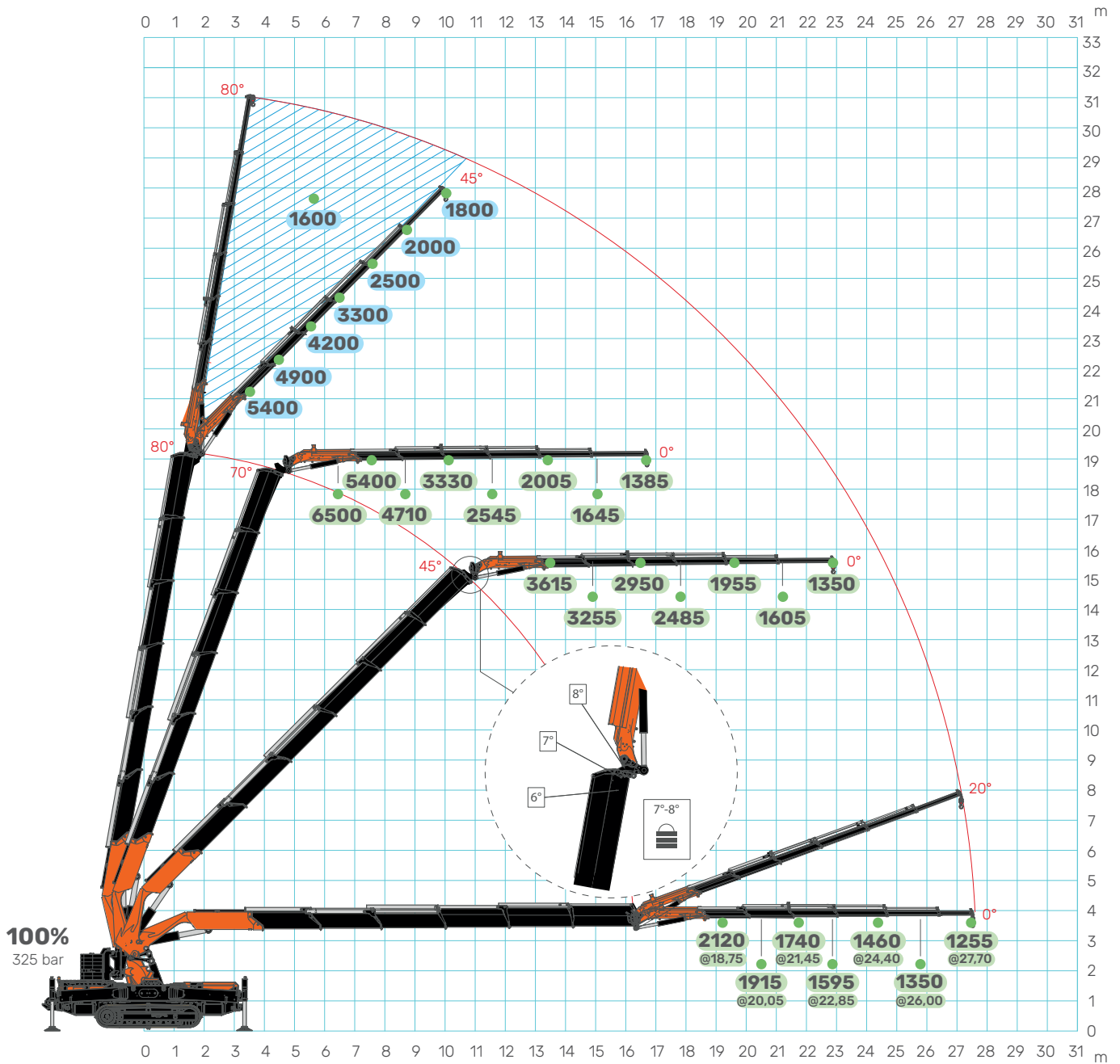
JF1050 CDH

JIB6500.6HA load chart

06.05.2026 | REV.0.0



[m] [kg]

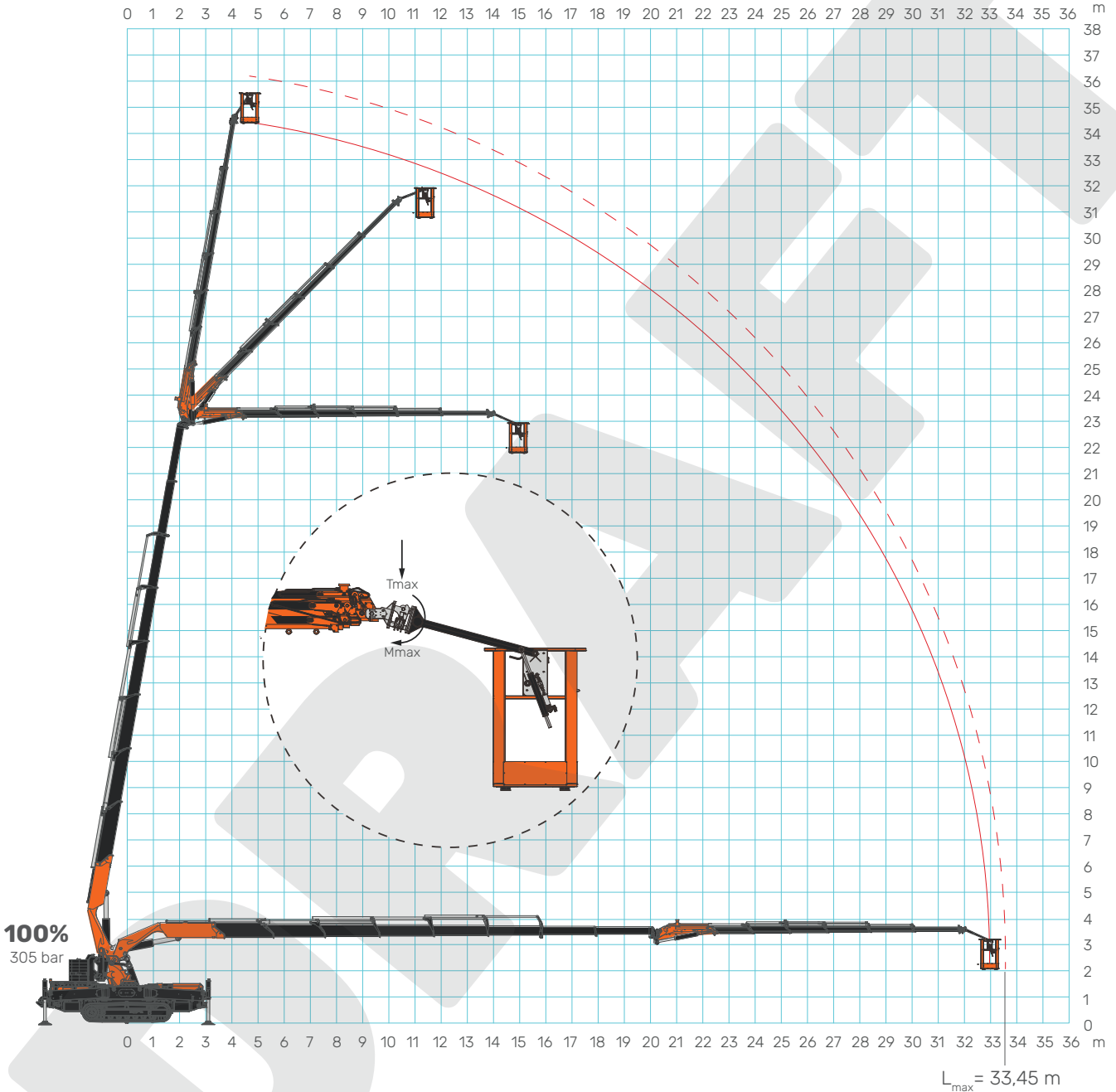


JF1050 CDH

One-man basket chart

06.05.2026 | REV0.0

PLE



PLE



MWP-1PG.JIB6500.6HA

Max Capacity

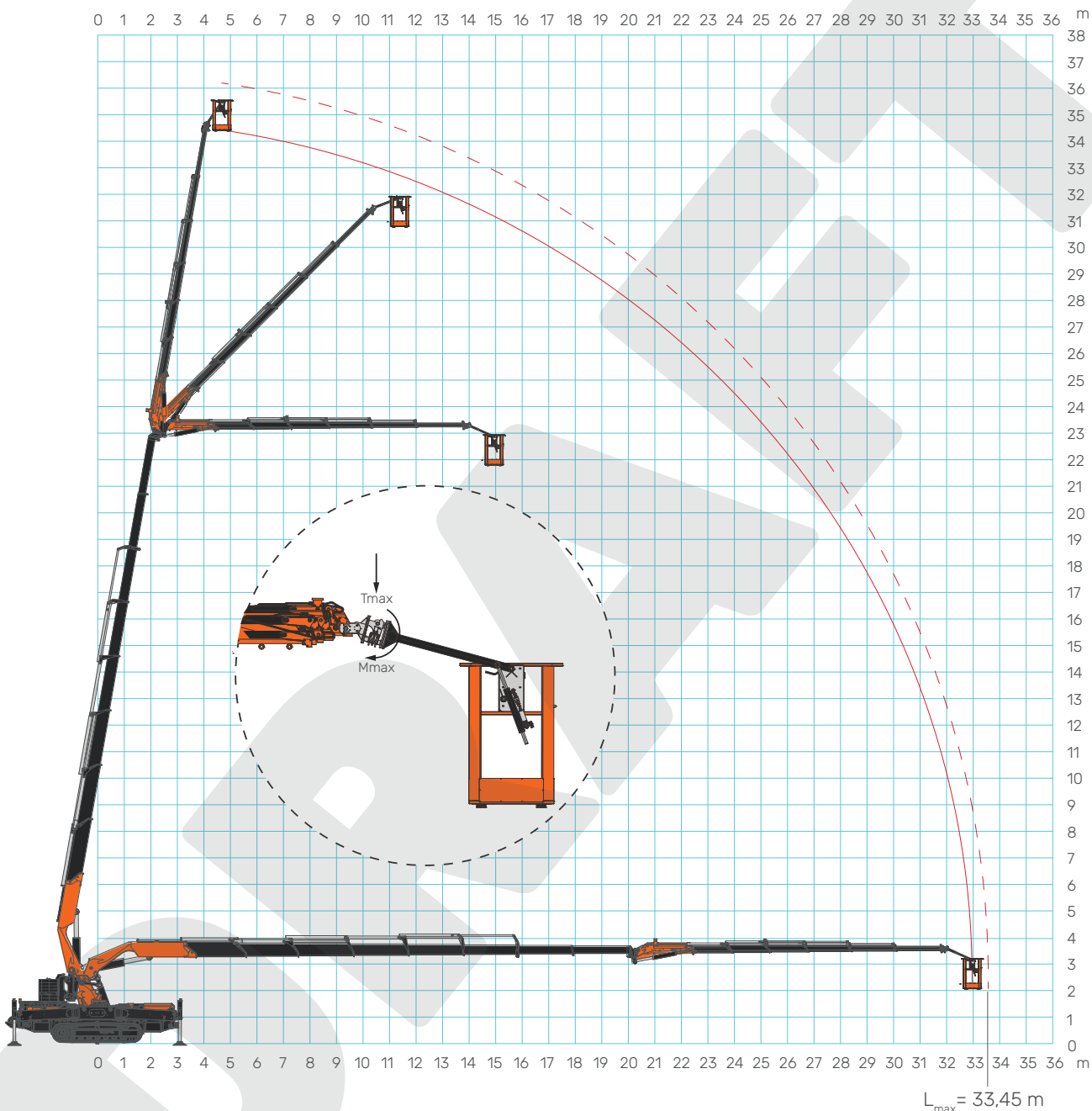
kg

120

^[1]: The crane is equipped with LMI. The maximum reachable distance may vary by about 1 m.

^[2]: The maximum reachable distance can be reached by extending the JIB first and then extending the boom.

Two-men basket chart



PLE	MWP-2PG.JIB6500.6HA	Max Capacity	kg	200
	MWP-2PG-A.JIB6500.6HA			200

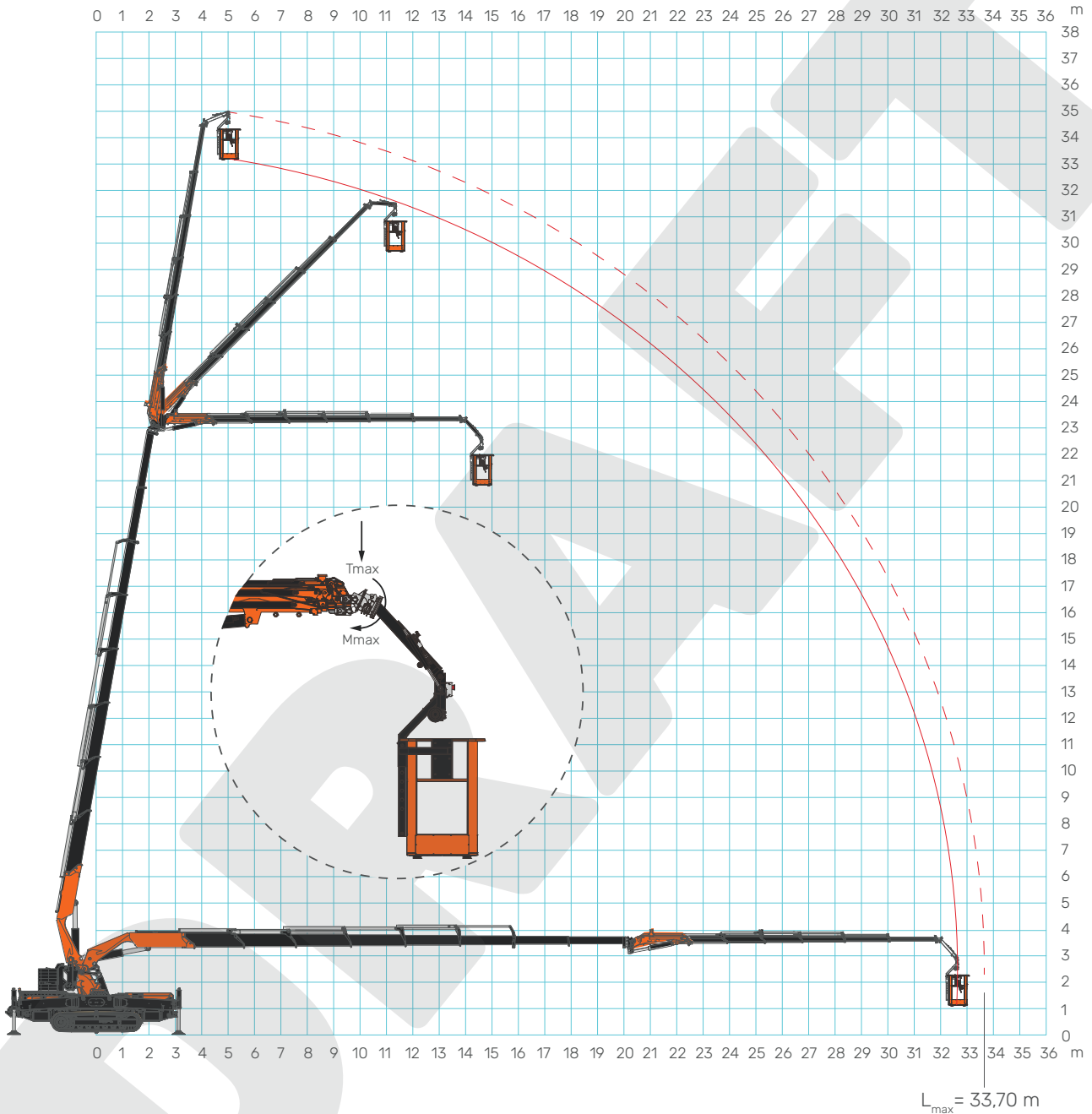
[1]: The crane is equipped with LMI. The maximum reachable distance may vary by about 1 m.

[2]: The maximum reachable distance can be reached by extending the JIB first and then extending the boom.

JF1050 CDH

Two-men rotating basket chart

06.05.2026 | REV0.0



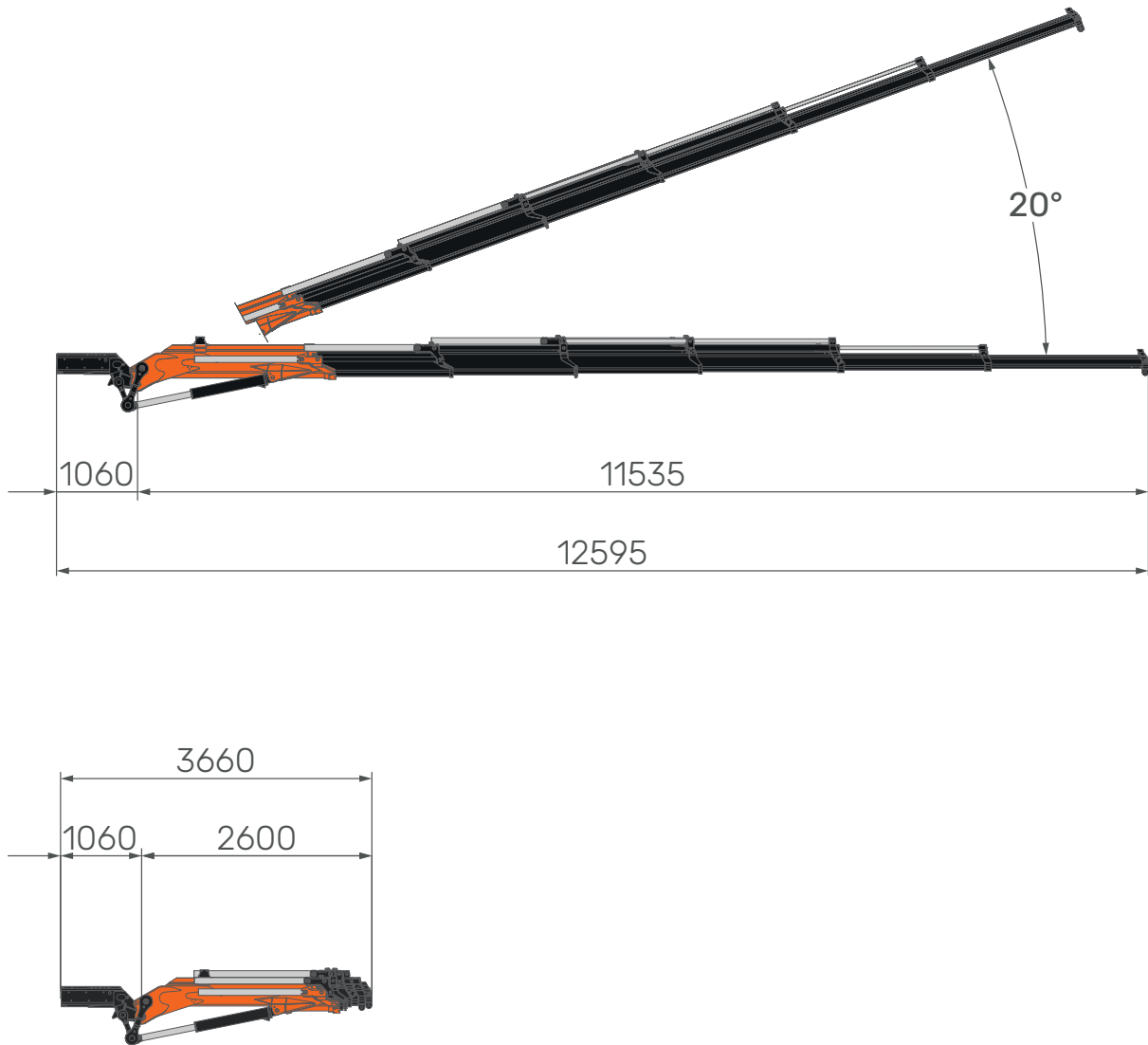
PLE		MWP-2PGR.JIB6500.6HA	Max Capacity	kg	200
		MWP-2PGR-A.JIB6500.6HA			200

^[1]: The crane is equipped with LMI. The maximum reachable distance may vary by about 1 m.

^[2]: The maximum reachable distance can be reached by extending the JIB first and then extending the boom.

ACCESSORIES

JIB6500.6HA



WEIGHT



JIB	JIB6500.6HA	With activation	kg	-
		Without activation		-

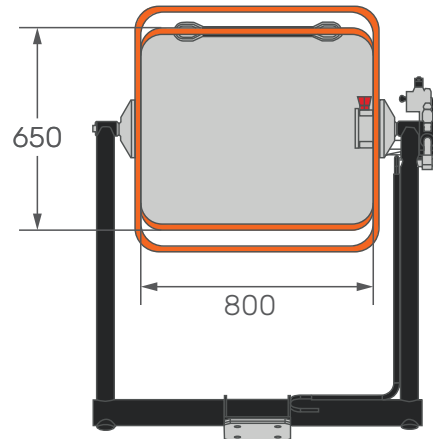
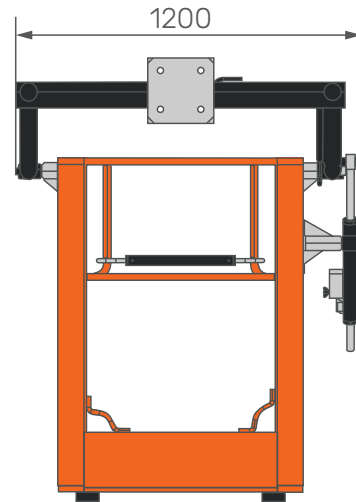
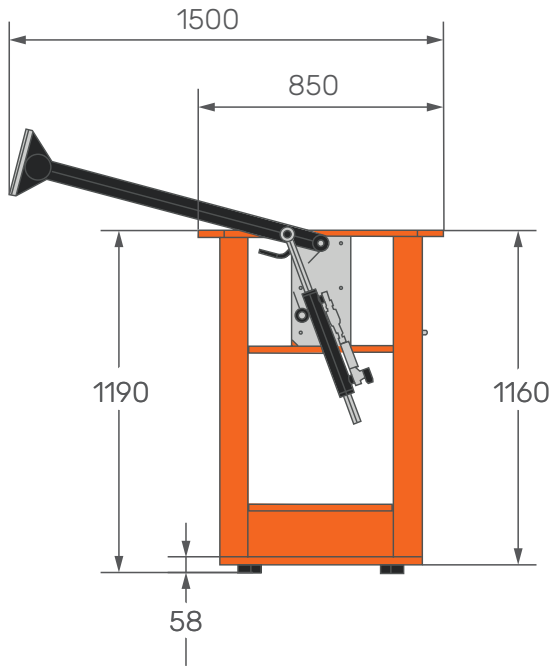
[mm]

JF1050 CDH

One-man basket features

06.05.2026 | REV0.0

MWP-1PG.JIB6500.6HA



WEIGHT

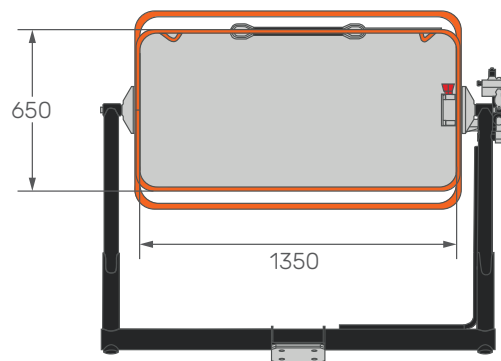
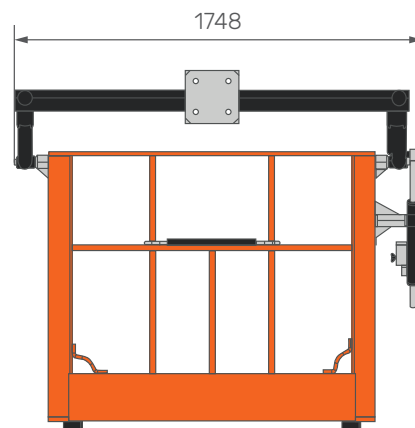
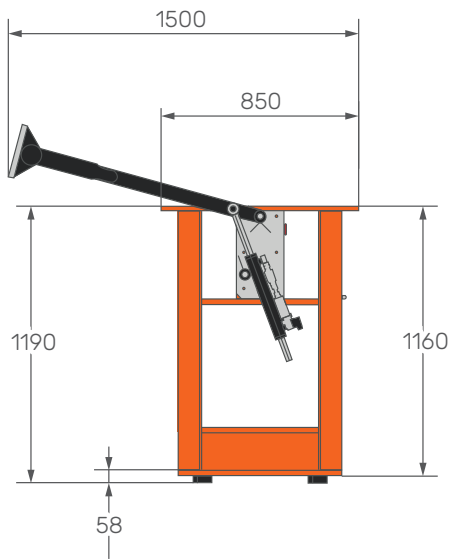


PLE	MWP-1PG.JIB6500.6HA	kg	133
-----	---------------------	----	-----

[mm]

MWP-2PG.JIB6500.6HA

MWP-2PG-A.JIB6500.6HA



WEIGHT



PLE	MWP-2PG.JIB6500.6HA	kg	160
	MWP-2PG-A.JIB6500.6HA		133

[mm]

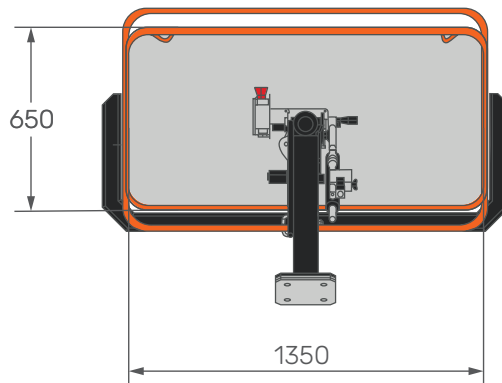
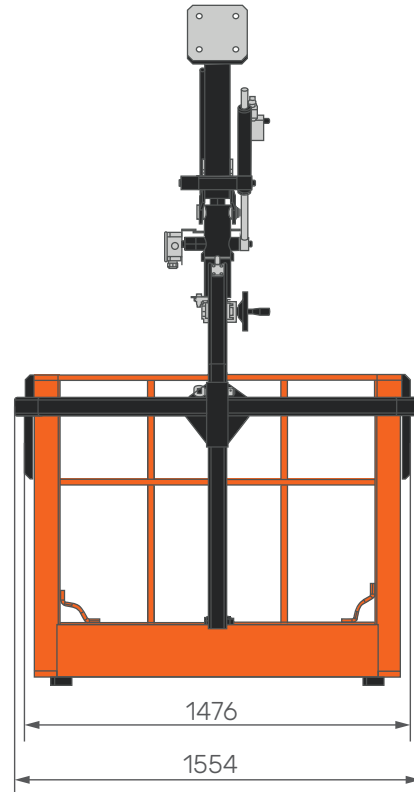
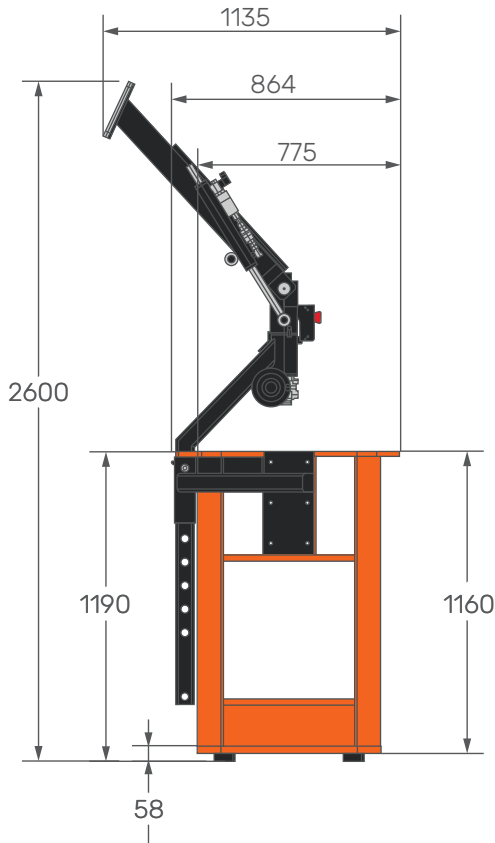
JF1050 CDH

Two-men rotating basket features

06.05.2026 | REV0.0

MWP-2PGR.JIB6500.6HA

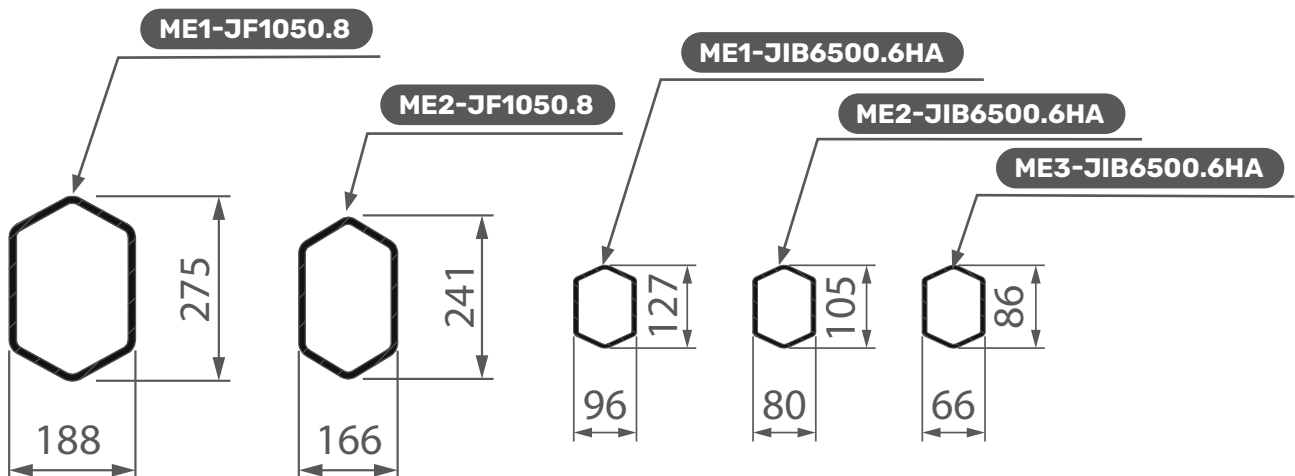
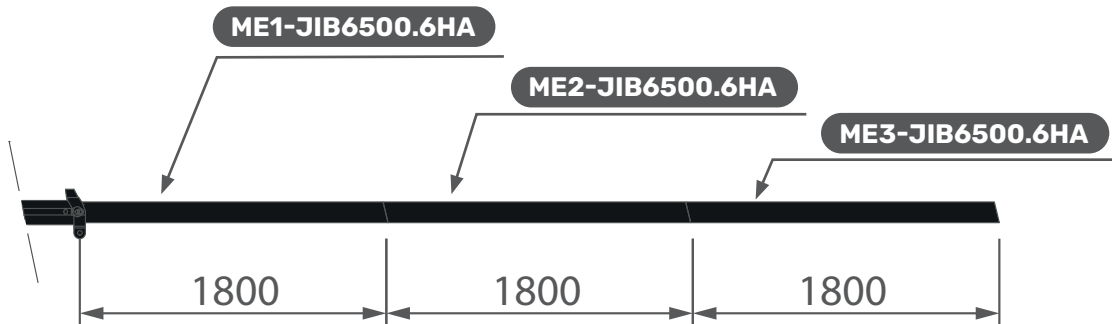
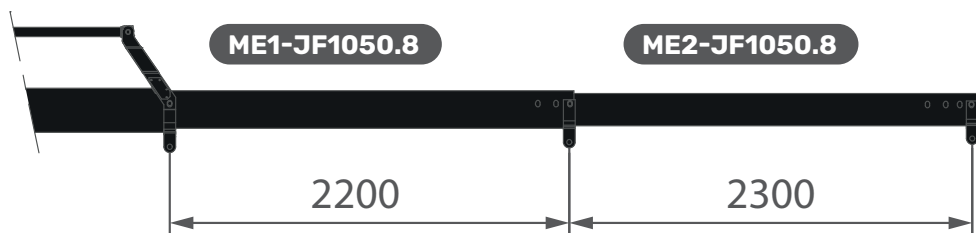
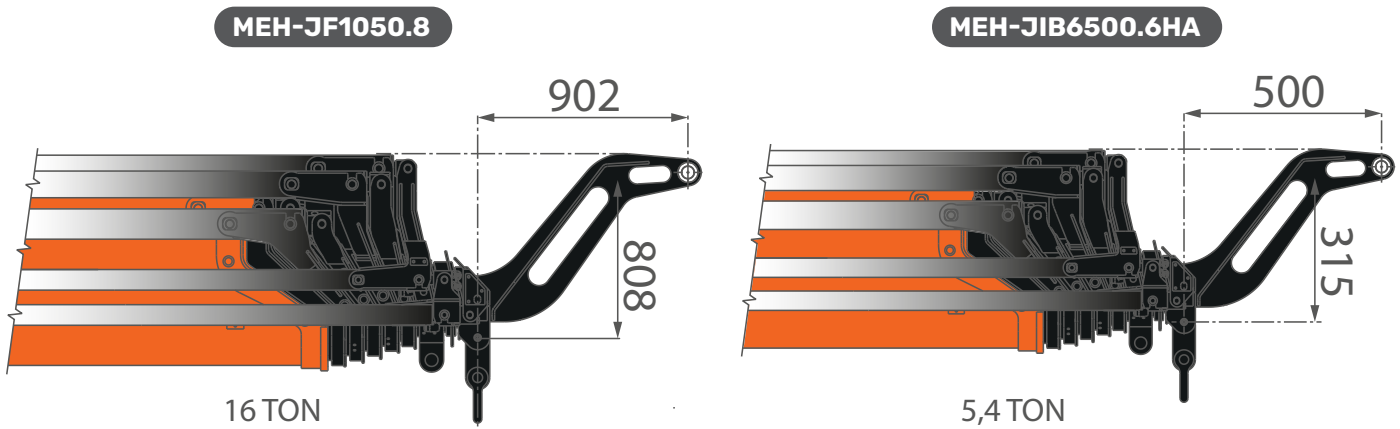
MWP-2PGR-A.JIB6500.6HA



WEIGHT



PLE	MWP-2PGR.JIB6500.6HA	kg	207
	MWP-2PGR-A.JIB6500.6HA		173































[mm]

JF1050 CDH

Symbols


06.05.2026 | REV0.0

SYMBOLS

 Weight	 Outriggers Mats	 Main Boom Lifting	 Hydraulic System
 Crane	 Engine	 Boom Length	 Electric System
 Travel Speed	 Powerpack	 Jib	 Working Temperature
 Gradeability	 Maximum Capacity	 Turret Slewing	 Hydraulic Activation
 Track Load	 Maximum Outriggers Load	 Winch	 Hook
 Sound Emissions	 Maximum Wind Speed in Working Conditions	 Hookblock	 Manual Extensions
 Low Marking Pads	 PLE Activation	 PLE	 JDP Jib Dual Power

 Load limited by LMI

 Load to be limited by the operator

 Load to be verified and limited by the operator

* Max. moment

LOAD CHARTS REMARKS

- HC1 HD4 S2 lifting class, according to EN12999:2020 standard.
- Load capacities are given in kg.
- Hookblocks and hooks weight is part of the load, hence it shall be deducted from the capacity values.
- The working radius is measured form the turret slewing centre.
- The supplied Technical Data is part of the Use & Maintenance Manual.
- Features and specifications may change without prior advice.
- All indicated data are for informational purposes only and are not binding as the crane performs differently depending on its use.



Jekko s.r.l.

Via Galileo Galilei, 6/8 – 31010 Godega di Sant’Urbano (TV) – Italy
info@jekko.it – www.jekko-cranes.com

SERIAL NUMBER: 06.05.2026 | REV0.0